

EXEN Barrier Gate Systems

MODEL : **BS-128**



EXEN BS-128 is a heavy-duty electro-mechanical barrier meant for control of vehicle traffic flow. It is most rapid and efficient method of managing access in residential, commercial and industrial car parks. Many features have incorporated to provide a safe, reliable and easily operated system for outdoor as well as indoor use.

Standard Features

- Heavy-duty design for 24-hours continuous application
- Barrier arm can be left or right orientated by easy refitting
- Auto closing function is selectable with instant or delay closing
- Low speed set by open or close limit switch for cushioning effect
- Multiple push button for Open, Close and Open/Stop/Close function
- Simple interface with proximity card and loop detector application
- Articulated or folding arm available for limited height application
- Most of the accessories and spare parts are common items
- Barrier arm can be manually lifted via a clutch-release key
- Weather-resistant coating against hostile environments
- Aluminium hollow arm available for 2 to 6 meter length
- Control panel with build in battery backup (optional)

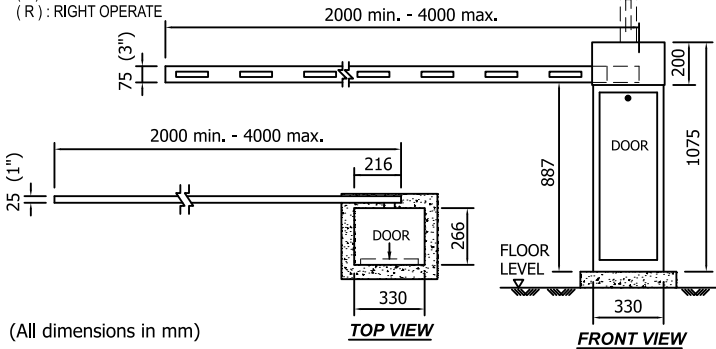
EXEN Barrier Gate Systems MODEL: BS-128

3M - 4M BARRIER GATE SYSTEM

Straight Arm (ST)

Item Code	Arm Type	Length (Meter)
ST - 3.0 / (L) (R)	1 Section	1" x 3" x 3.0M
ST - 3.5 / (L) (R)	1 Section	1" x 3" x 3.5M
ST - 4.0 / (L) (R)	1 Section	1" x 3" x 4.0M
ST - 4.5 / (L) (R)	2 Section	1" x 3" (+ 2.5") x 4.5M
STO - 3.0 / (L) (R)	1 Section	Ø2.5 x 3.0M
STO - 3.5 / (L) (R)	1 Section	Ø2.5 x 3.5M
STO - 4.0 / (L) (R)	2 Section	Ø2.5 (+ Ø2) x 4M

(L) : LEFT OPERATE
(R) : RIGHT OPERATE

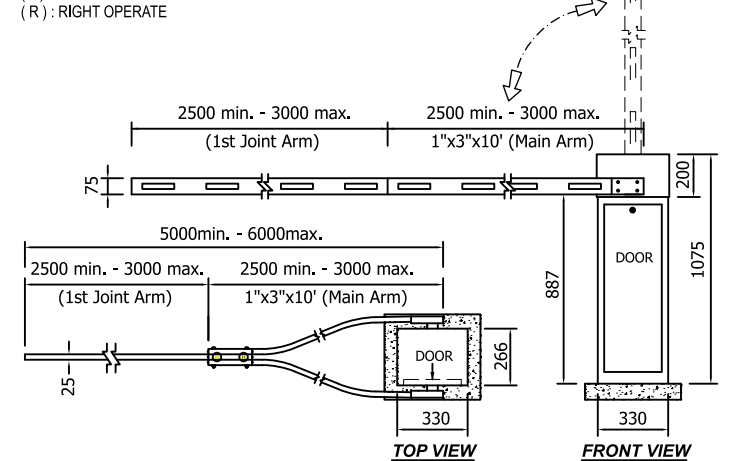


5M - 6M BARRIER GATE SYSTEM

Y - Shape Arm (YS)

Item Code	Arm Type	Length (Meter)
YS - 5.0 / (L) (R)	Y Section	1" x 3" x 5.0M
YS - 6.0 / (L) (R)	Y Section	1" x 3" x 6.0M

(L) : LEFT OPERATE
(R) : RIGHT OPERATE

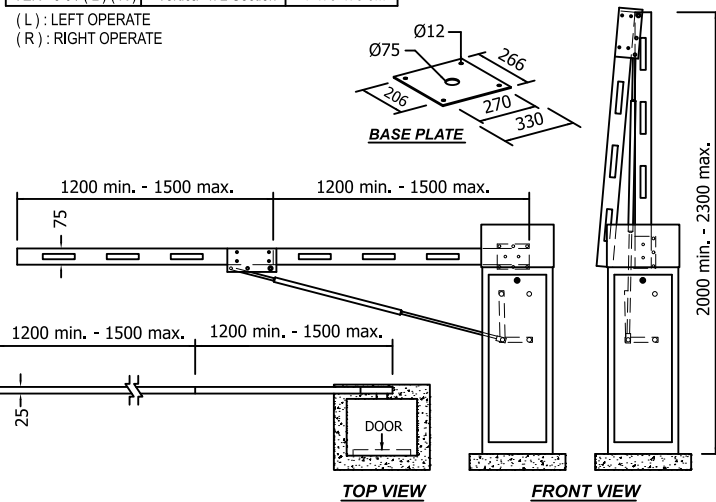


VERTICAL FOLDING BARRIER GATE SYSTEM

V - Shape Folding Arm / 0° (VER)

Item Code	Arm Type	Length (Meter)
VER - 3.0 / (L) (R)	Vertical In 2 Section	1" x 3" x 3.0M

(L) : LEFT OPERATE
(R) : RIGHT OPERATE

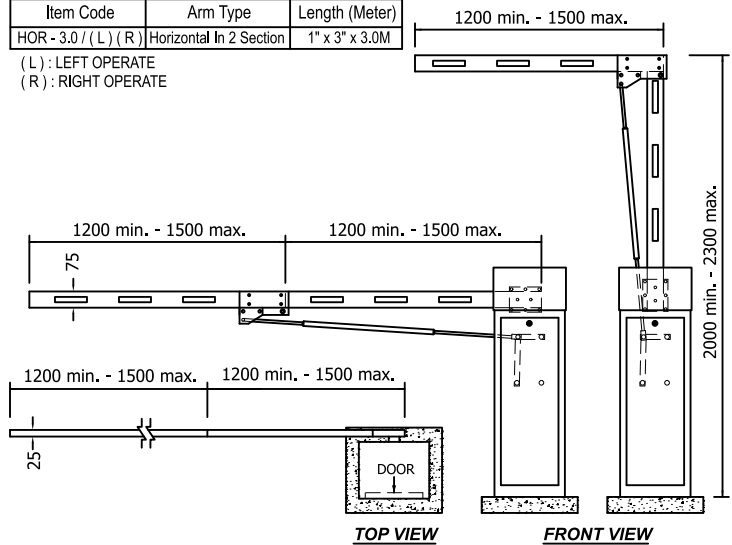


HORIZONTAL FOLDING BARRIER GATE SYSTEM

L - Shape Folding Arm / 90° (HOR)

Item Code	Arm Type	Length (Meter)
HOR - 3.0 / (L) (R)	Horizontal In 2 Section	1" x 3" x 3.0M

(L) : LEFT OPERATE
(R) : RIGHT OPERATE



Technical Data

Input power supply	230Vac, 50Hz
Motor rated power	120w, 24Vdc
Motor current drain	5 Amps
Barrier arm length	2 - 6 Metres
Rotating duration (90°)	2 - 6 seconds
Cycle per 24 hrs (open/close)	10,000 (8S/cycle)
Safety device	Mechanical clutch
Shaft torque	220 Nm
Battery back-up	Optional
Lubrication	Grease
Operating temperature	-20°C to 70°C
Weight (packaged)	60 Kg
Packaged dimension (mm)	370 x 305 x 1110



Distributed by:

